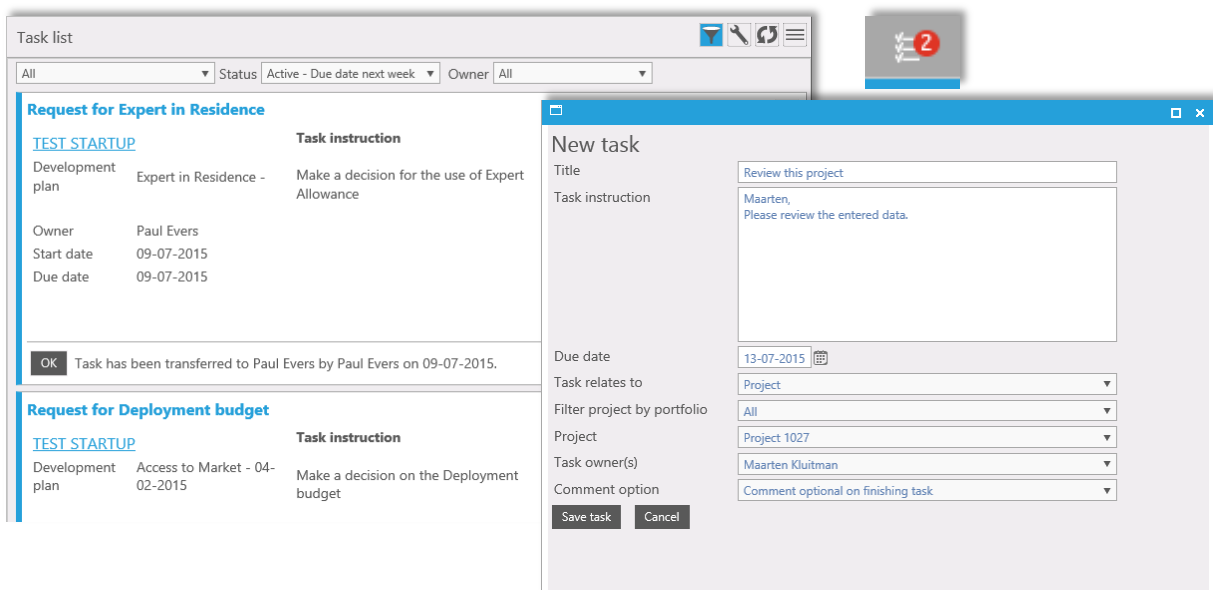


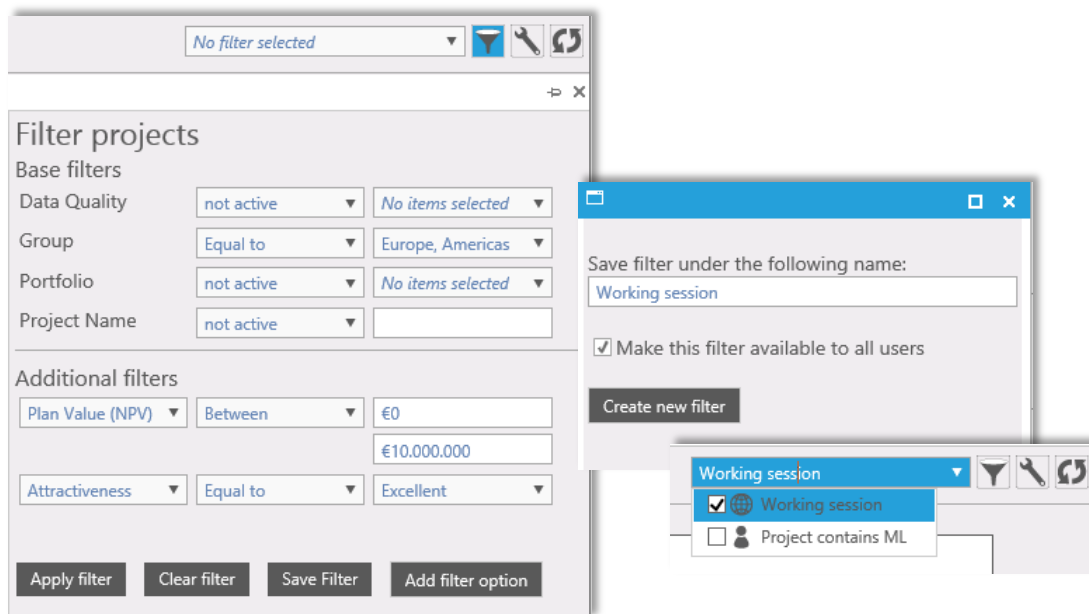
Workflow

Feature	Description
Workflow automation	<p>Flightmap 5.0 contains a completely redesigned flexible workflow mechanism.</p> <p>This workflow supports common processes such as review and approval of project proposals, budget preparation and approval, and documented planning changes, in a series of tasks.</p> <p>The workflow supports several kinds of tasks, e.g. creating Task list tasks, sending emails, creating reports and editing data. All these tasks can be conditional (on project properties).</p> <p>Tasks are assigned to users based on their names or roles, and active tasks are shown in each user's task list. These tasks have calculated due dates. Users can receive email notifications when tasks are assigned to them. Workflows can be triggered on project creation or on changing of a data field.</p> <p>The workflow supports a subset of BPMN 2.0: tasks and decision nodes (activities and exclusive gateways respectively in BPMN 2.0).</p>
Task list	<p>The old task list is redesigned. By default, the task list shows your own tasks for the coming week. Approval tasks can be directly performed from the task list. Tasks have links to presets to support easy task completion. Open tasks in the next week are shown with an icon. This one week period can be adjusted in the user settings.</p>
Manual tasks	<p>Besides tasks created by a workflow tasks can also be created manually by a user. These tasks also appear in the Task list.</p>



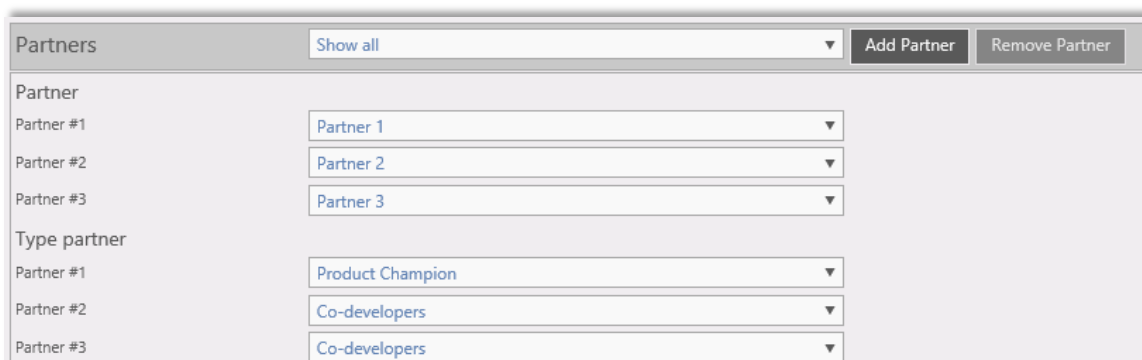
Filters

Feature	Description
Extended filter functionality	Projects can be filtered on all types of inputs and outputs (categories as well as numerical and financial, e.g. NPV between €0 and €10.000.000). All filters can be saved and shared, and saved filters can be added to presets and to portfolio reports.



Dynamic lists

Feature	Description
Dynamic lists	Flightmap supports the implementation of dynamic lists, to link a variable number of partners, technologies, or products to each project. These lists can be collapsed or expanded by the user.



Various

Feature	Description
Ctrl-s for saving	The save function can now be triggered by the shortcut Ctrl-s.
Clickable charts	All areas that represent projects, portfolios or markets have been made clickable. When clicking this area the corresponding item in Project data, Portfolio data or Market data will be called. This functionality applies to Portfolio over time (with stacked by project or stacked by portfolio active), Resource diagram (with stacked by project active), Balance (with stacked by project active) and the Roadmap diagram.
Maintenance message	A maintenance message can be displayed on the Sign in screen of your Flightmap portal, e.g. to announce an offline period or another message for all Flightmap users.

Flighthub extensions	Flighthub (our connectivity platform) supports now Project, Partner and Market data import and export.
Performance improvements	Several performance improvements have been made in the software.
Bugs	Several minor bug fixes.