

FLIGHTMAP 9.0 Release

FLIGHTMAP 9.0 is the next major release of FLIGHTMAP. It comes with new bar charts that include additional functionality and major performance improvements. Besides, the user interface has been improved and the roadmap chart is now available for (automated) reporting.

Feature	Description
Pre-generation of charts	All the bar and line charts (including over time, balance, resource planning, waterfall and roadmap) can now be pre-generated in the background (10 most-used presets are free of charge). Accordingly, all the calculations are already done when the chart is requested. This makes the chart available almost instantly. Pre-generation can be activated per preset by (re)saving the preset, or for current presets on the preset management page (menu Preset > Preset management).

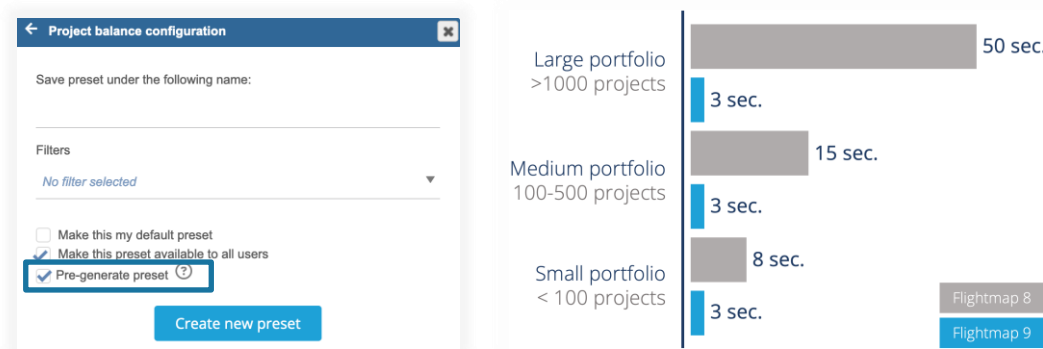


Figure: activate pre-generation by saving the chart as preset (left), resulting in major improvements of loading time (indication for average complexity of calculations in portfolio over time chart).

Improved over-time and balance charts

The (project, portfolio, market, ...) over-time and balance chart have been re-developed to support pre-generation (explained below) and make the charts more responsive. The new charts also come with a new mouse-over tooltip design and the option to read the values directly from the chart.

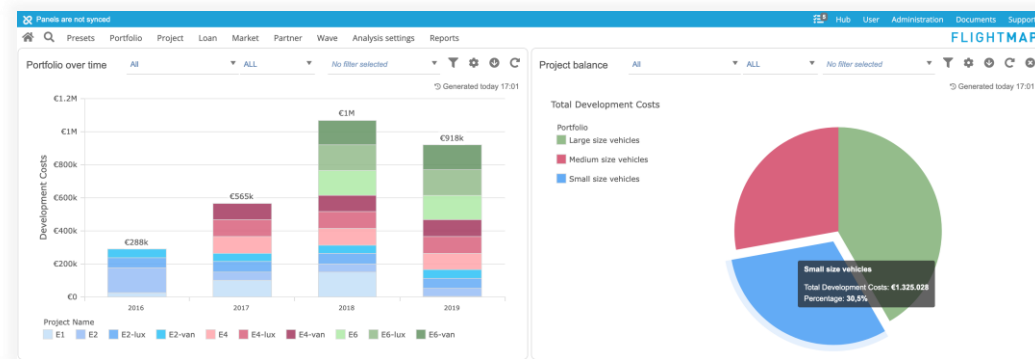



Figure: new portfolio over-time chart that shows the values on top of the bars (left panel) and new balance chart with new click-on and tooltip for more information.

Roadmap chart available for reporting

To maintain a clear overview of the roadmap for the upcoming years, Flightmap has the built-in Roadmap chart. This shows the individual project with their phases, dependencies between projects, and overarching (technology) waves.

Due the increasing use of this chart, it is now also available to be added to reports for easy distribution or standardized periodically reporting. Same as for other charts, it can be added to a report via the -icon at the top-right of a chart.

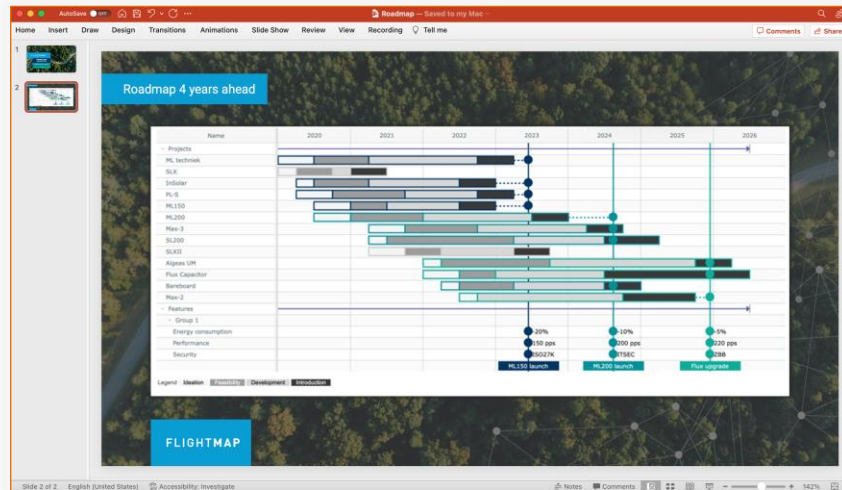


Figure: roadmap chart available for (automated) reporting to PowerPoint, Word or PDF.

Other improvements

- The styling of inputs has been renewed, for improved data editing and easier configuration of charts.
- Various performance improvements for charts and calculations.

FLIGHTMAP

Luchthavenweg 18C

5657 EB Eindhoven

Netherlands

FLIGHTMAP Support: +31 88 396 2780

support@flightmap.com

www.flightmap.com