


FLIGHTMAP 10 Release

We are excited to announce the next major update of FLIGHTMAP. In this release, we have focused on streamlining your portfolio management process with new intelligent features. Below a breakdown of what's new.

Feature	Description
Home screen	<p>To quickly get started right away when opening FLIGHTMAP, a new home screen has been introduced. The home screen pop-ups automatically after login and can be manually opened using the home button  top-left.</p> <p>The home screen shows recommendations based on common analyses by users with similar roles. Also, the home screen shows a 'Pick up where you left off' section with recently opened overviews or performed analyses.</p>

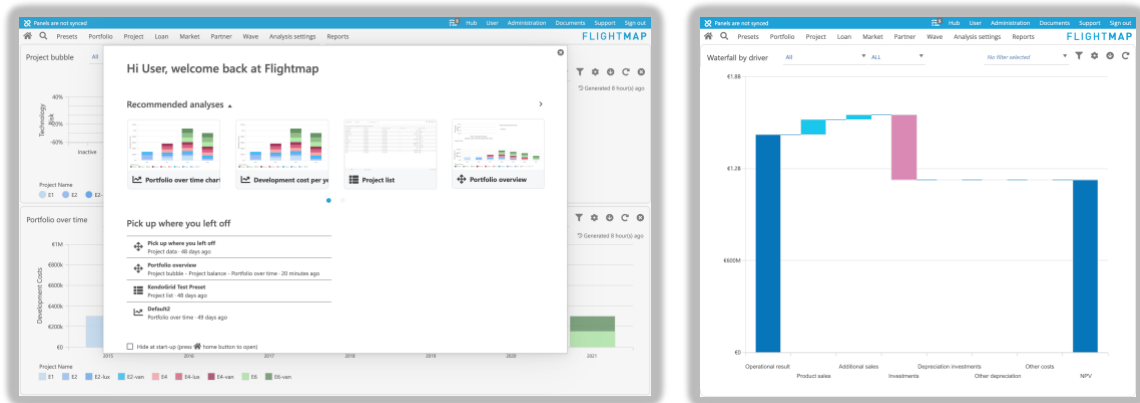
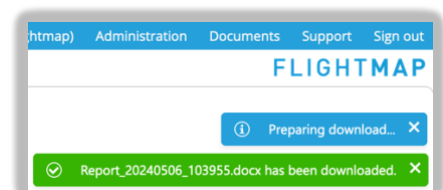


Figure: new home screen (left) and waterfall by driver chart.

Waterfall by driver	<p>In order to make well-informed portfolio decisions, it's important to understand what drives a particular KPI. The new waterfall by driver chart shows the exact information behind a KPI in a visual presentation, to drill-down into the drivers of a KPI in order to understand how a KPI is being calculated. Tailoring the driver structure can be done via FLIGHTMAP support.</p>
----------------------------	--

Edit due date in tasks	<p>The task list has been improved to edit the due dates (for users with sufficient rights) in case of an unexpected project delay. This makes sure contributors receive notifications when the new due data is overdue, to not miss any tasks.</p>
-------------------------------	---

Background processes with improved notifications	<p>Actions that require collecting large amounts of data (e.g. creating many versions, exporting large reports) are now performed in parallel on the background, to let the user continue with the analysis and notify when (for example an export) is ready to download. This minimizes waiting time and significantly improves the flow of the portfolio planning actions in FLIGHTMAP.</p>
---	---



Stack-by multiple data series

One of the most used visualisations in portfolio planning is the stacked over-time graph, to show for example the profit per product category or cost per business unit over years. Stacking the chart is now also possible for multiple data series. For example, analysing both the revenue and costs per product category in a single graph side-by-side. This also has a high value in scenario analysis: presenting multiple scenario's side-by-side with stacked information to make a well-informed decision.

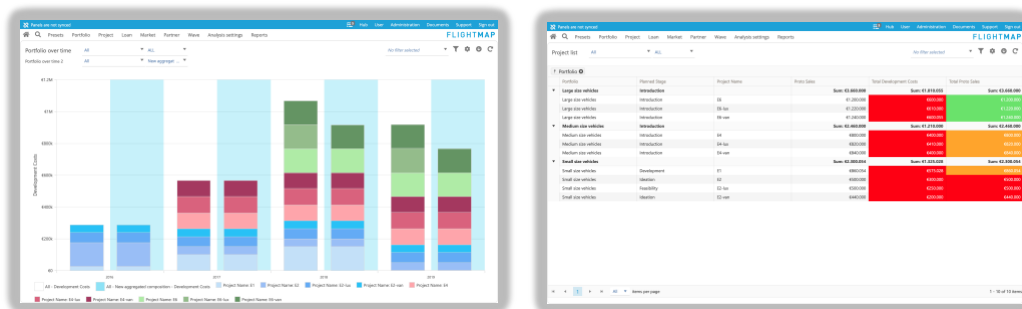


Figure: stack-by possibility for multiple data series (left) and show the totals per group in the project list.

Grouping data with totals in the project list

Exploiting the intelligent data model behind FLIGHTMAP, it is possible to easily slice all available information in multiple ways. As a next step in supporting this, the list views of projects, products and markets have received a major update. This enables showing the aggregates for each group. Accordingly, all the data available in the list can now not only displayed per project (or product or market) but also on all selection fields. For example, a total per portfolio, per product category, or per business unit. This makes it very easy to compare strategic areas or buckets for the optimal portfolio planning.

Other improvements

In addition to the new and improved features above, other improvements are:

- The column size in lists is now automatically saved when creating a preset, to further customize the list overviews
- User roles can now be easily customized by administrators; e.g. whether users with a particular role are allowed to create presets visible to all users
- Notifications are restyled for a uniform and improved visibility. In some exceptional cases, users have to wait till an action of another user is completed (e.g. an upload of data). Users that are waiting now receive a notification to be informed why an analysis may take longer than expected.
- The interface to upload an Excel has been improved to support drag & drop of Excel files

FLIGHTMAP

Torenallee 20

5617 BC Eindhoven

Netherlands

FLIGHTMAP Support: +31 (0)40 40 11 343

support@FLIGHTMAP.com

www.FLIGHTMAP.com