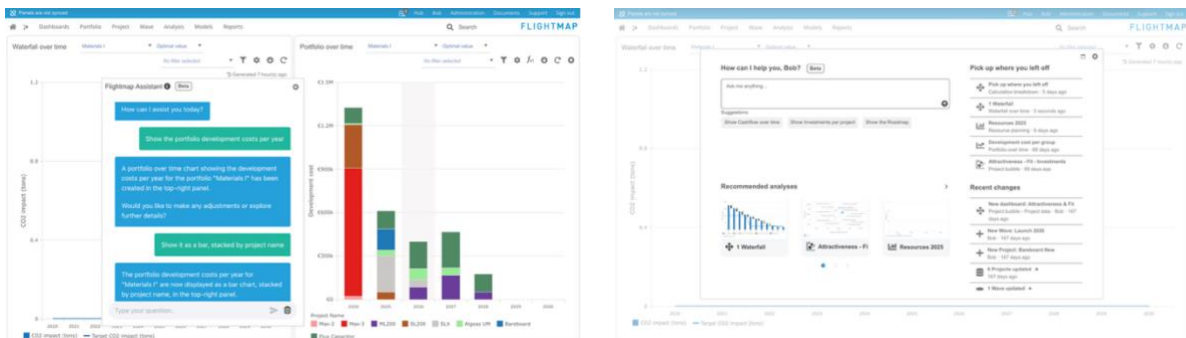


Flightmap 11 introduces an AI assistant, a redesigned home screen, outlier analysis, and calculation usage. Aiming for faster insight, clearer navigation, smarter anomaly detection, and transparent impact analysis to portfolio and project management.

## AI assistant (beta)

Flightmap 11 features an AI assistant to support portfolio analysis and interpretation. Users can ask questions in natural language and generate relevant views directly from existing portfolio data, with all data remaining on Flightmap’s server. This functionality reduces manual analysis work and supports portfolio managers in focusing more on structure, coherence, and strategic direction.



AI assistant (left side) and re-designed home screen.

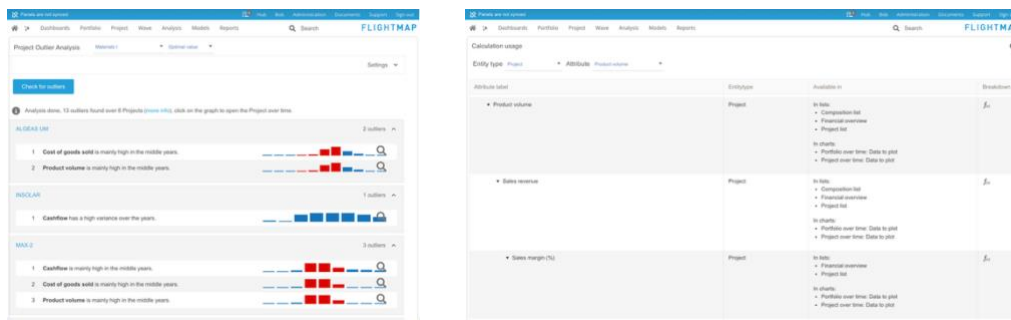
## Re-designed home screen

The home screen has been redesigned to provide direct access to Flightmap AI immediately after login. When the AI assistant is not available, the improved portal search is shown instead. Users who prefer a different starting view can configure their default landing page via User menu → User defaults. This creates a more focused entry point and supports efficient orientation and daily portfolio management.

## Outlier analysis

Outlier Analysis in Flightmap 11 highlights years that behave differently from the normal performance pattern of a project or portfolio. It visually flags unusual peaks or dips across the analysis horizon, making potential risks or exceptional results immediately visible. Outliers are highlighted in charts and can be clicked for deeper exploration.

The feature supports both project-level analysis (per project trends) and portfolio-level analysis (total portfolio patterns and composition checks).



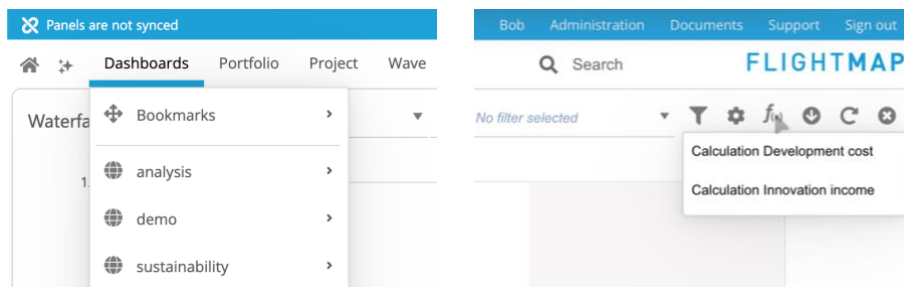
Outlier analysis (left) and calculation usage

### Calculation usage

To complement the calculation breakdown, Flightmap now also supports calculation usage. This provides the reverse perspective: from a specific data point, users can see which KPIs and calculations depend on it. This makes impact analysis explicit, helping portfolio and project managers understand which downstream calculations will be impacted and which results may be affected by data updates.

### Preset workflow improvements

Based on user feedback, Flightmap 11 clarifies the preset workflow by introducing clearer terminology and structure. Panel presets are now **bookmarks** (single-chart views), screen presets are **dashboards** (multi-chart layouts), and report presets are now **report templates**. This makes navigation more intuitive and reduces confusion between different preset types.



*Presets are now 'Dashboards' (left) and open calculation breakdown from above the chart or list*

### Other improvements

Next to the new features above, improvements have been made to:

- **Calculation breakdown** is now available to all users: above a chart or list, users can directly open the calculation breakdown. This makes it more intuitively and available to all users.
- **Drill-down to data page** now always opens in a new panel if available
- **Pop-up windows** have become more responsive and easier to move around